



hallmark  
DOORS

# hallmark vogue collection

DOORS  
CAVITY SLIDERS  
FIRE DOORS

0800 846 237  
[sales@hallmarkgroup.co.nz](mailto:sales@hallmarkgroup.co.nz)

## VISION PANEL OPTIONS

If it's a stylish entrance you're after, the NZ made Vogue vision panel collection has your options covered. This large and high quality selection features many different architectural designs to give your home its own signature.

Should you wish to continue your look beyond the entrance, the Vogue Vision Panel Collection is manufactured with both MDF and tempered hardboard for interior and sheltered exterior applications.

All doors come with premium 4.75mm skins for greater stability, impact resistance and a high quality paint finish. All interior doors up to 2700 x1210 are pre-primed with a quality moisture resistant UV primer.

ALL DOORS COME AS SOLID CORE. DOORS AVAILABLE UP TO 2400x1210MM. DOORS FINISH AT 38MM THICK AS STANDARD. STEEL INSERT OPTIONS AVAILABLE.



VVPA



VWPB



VWPC



VWPD



VVPE



VVPF\*



VVPG



VWPH



VVPI



VVPJ



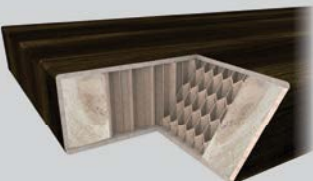
VVPK



VVPL

## CORE OPTIONS

### Honeycomb Hollow Core



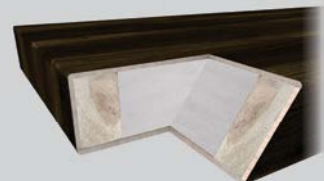
Hollow core doors are the most commonly used doors in residential projects. The core is made of a cardboard honeycomb cell and is very light weight. Hallmark hollow core doors use a thicker and more compact honey comb core which provides extra rigidity, impact resistance and stability.

### Particle Board Core



The ultimate in strength, acoustic qualities and impact resistance, the Hallmark solid particle board door is widely used in commercial and high-end residential projects.

### Polystyrene Core



Polystyrene core doors provide a lightweight door option with improved thermal qualities and impact resistance. Hallmarks solid polystyrene core doors also reduce the transmission of air-borne sound and are a cost effective option to a particle board core

## ROUTERED PANEL DOORS

Featuring a stylish rout design with several popular patterns to select from, the Vogue routered panel collection completes the look in today's modern home. All designs feature Hallmarks 25mm wide square corner rout and are available with MDF for interior and tempered hardboard for sheltered exterior doors.

All doors come with premium 4.75mm skins for greater stability, impact resistance and a high quality paint finish. All interior doors up to 2700x1210 are pre-primed with a quality moisture resistant UV primer.



- Doors available in hollow core, polystyrene core and solid core
- Doors available up to 2700 x1210mm
- Doors finish 38mm thick as standard. Other thickness options available
- Steel inserts for greater stability are available (recommended on all cavity slider doors)



VRP1



VRP2



VRP3



VRP4



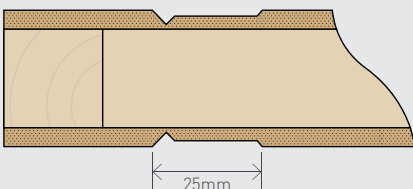
VRP5



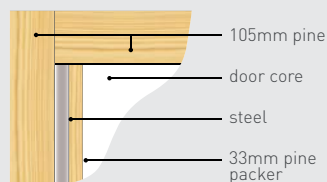
VRP6

## ROUTERED GROOVE DETAIL & SKIN OPTIONS

### ROUTERED GROOVE DETAIL



### Steel Reinforced



Hallmarks steel reinforced doors provide excellent stability and are highly recommended in all cavity sliders. Steel reinforcing is also recommended in all doors over 2400mm high and all doors over 1000mm wide. Steel reinforcing is commonly used on the 2 long edges but in wider doors (1000mm+) it is recommended to include steel reinforcing on all 4 edges. Hallmark doors over 1400mm wide will also have central vertical steel reinforcing for extra stability.



All Hallmark doors are covered by the Hallmark Doors Warranty. Each Hallmark door carries a label on the door edge stating the main conditions of the warranty. This label can only be removed by the painter otherwise guarantee is void. The label addresses items relating to storage and handling, installation and finishing. **It is important you read this label.** Hallmark doors are manufactured to strict quality standards and hopefully you never need to make a warranty claim. However all doors are made from timber products and thus are subject to movement. Our warranty covers door movement beyond specified limits.

### hallmark exterior doors Warranty

Hallmark exterior doors carry a five year warranty against defects in workmanship & materials, specifically delamination of the skin or clashings from the core and excessive distortion from tolerance. All technical information, storage and handling specifications are as per the Hallmark interior doors warranty. Exterior doors installed in a situation with high temperature fluctuations such as spa or sauna rooms carry no warranty against warp.

#### Uses

- Sheltered exterior with adequate eaves covering (minimum 1200mm).
- General interior

#### Finishing

Exterior finishes must be used on all exterior doors. All doors must be fully painted with a full coating system prior to site installation. Exterior doors must not be painted in dark colours, particularly when the door is exposed to direct sunlight.

### hallmark interior doors Warranty

Hallmark doors are manufactured with the highest craftsmanship and carry a five-year warranty provided all storage, handling, finishing and hanging instructions are followed.

Hallmark doors are warranted against defects in workmanship and materials, specifically delamination of veneer, or clashings, separation of the skin from the core, veneer splits and excessive distorting from tolerance. No doors over 2400x1200mm are covered under guarantee. The manufacturer will not be held

responsible for additional charges of hanging, painting or other charges arising from the replacement of doors.

#### Storage and Handling

Inspect all doors upon arrival for freight damage and visible defects. The manufacturer must be notified within four days if damage has occurred.

Any claims outside of this time frame cannot be recognised.

Show through of any components on a 3mm skin door is not considered a defect.

Warp exceeding 5mm shall be considered a defect on doors up to 2400x910mm.

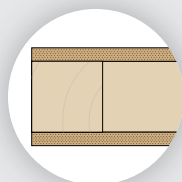
Doors exceeding this size carry no guarantee against warp. The manufacturer will accept no responsibility for defective doors when the moisture content of the timber exceeds 18%.

Doors must be stored flat in a clean, dry area away from direct sunlight. A flat MDF cover sheet must be placed on the top door at all times should it be exposed.

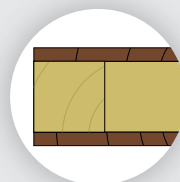
Variations in colour are not considered a defect.

#### Finishing

When finishing, ensure the door is dry and free from dust and grime. The two faces and all four edges of the door must be sealed and coated within two days of arriving on site. Linseed oil or Linseed oil based products are not to be used on any of Hallmark's interior doors. Staining is at your own risk. Hallmark Doors do not accept any liability for the finished quality of a stained door. Coating 'slump' on the veneer joints is normal and will not be considered a defect. The manufacturer is not liable for the paint finish. Any fibre raise should be sanded flat before coats are applied. Fibre raise is a natural reaction and is not considered a defect.



4.75MM MDF SKIN  
(FOR INTERIOR USE)



4.75MM TEMPERED  
HARDBOARD SKIN  
(FOR EXTERIOR USE)

# hallmark's door range



Fire Doors



Veneers



Speciality Doors



V-Grooved



Routed Panel



From modest beginnings in 1991 as Interior Timbers to their comprehensive development into the Hallmark Group, this family owned business is now one of the most high profile door manufacturers in New Zealand servicing all areas of NZ and into the Pacific Islands.

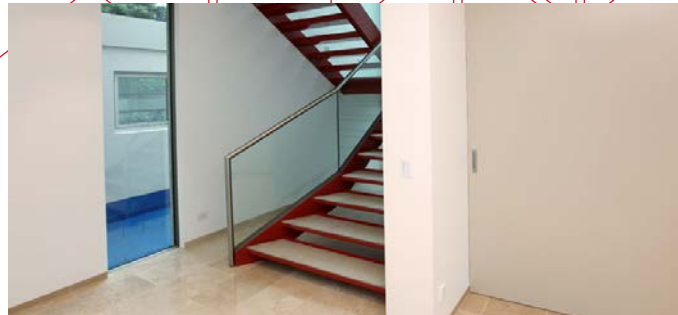
Covering all aspects of interior construction, Hallmark Group has become the preferred choice nationwide for large scale commercial and

high end residential projects. Attention to quality, dedication to service, and commitment to proactive project management, are all contributing factors to Hallmark Groups prized market position. Our Project Team works with Designers and Specifiers early in the development and construction process selecting veneers and specifying performance rated doors to ensure successful outcomes.

Hallmark Group has a proud history of success and a forward thinking architectural approach to being the best in their industry.

# hallmark's full range

## Our Comprehensive Product Range For Interiors



### Doors

Hallmarks door division manufactures the most comprehensive range of doors on offer in the market. From flush paint quality through to grooved and veneer doors, the selection is suited to a wide range of residential and commercial applications.

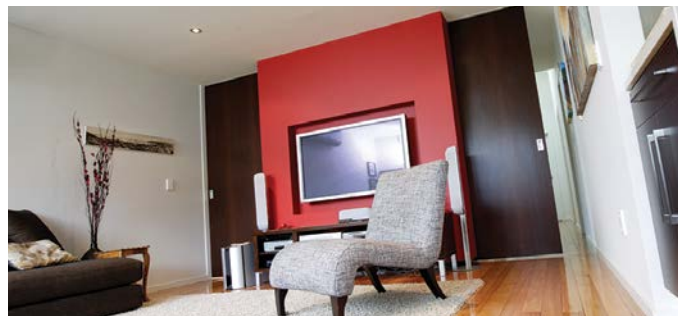
### Cavity Sliders

Hallmarks sliding door division manufactures a comprehensive range of doors from cavity sliders to wardrobe sliders to room dividers. The selection is suited to a wide range of residential and commercial applications.



### Fire Doors

With its dynamic ongoing R & D programme, Hallmark's performance rated doorsets offer the latest certified designs in acoustic, fire and other products. Fire doors are the major part of this product group with over 500 fire approvals.



### Urbinos

The Urbinos product group manufactures and supplies aluminium profiles for commercial and high end residential fitouts. All under the 'Urbinos' brand this suite covers partitions, door frames, skirtings, door inlays and trims.

### Veneers

The Hallmark Group is one of the only veneer manufacturers in New Zealand. A huge range of veneers from New Zealand and around the world are processed into layons and pressed onto MDF and other wood products for Hallmarks own door production and for veneered panels.

#### Rangiora

P: +64 3 313 4754 0800 TIMBER [NZ only] | F: +64 3 310 7160  
355 Flaxton Rd, PO Box 413, Rangiora 7440

E: [sales@hallmarkgroup.co.nz](mailto:sales@hallmarkgroup.co.nz) W: [www.hallmarkgroup.co.nz](http://www.hallmarkgroup.co.nz)