



hallmark
DOORS

hallmark milano collection

DOORS

CAVITY SLIDERS

FIRE DOORS

0800 846 237

sales@hallmarkgroup.co.nz

Te Waonui
FOREST RETREAT

SPECIALTY VENEER DOORS

For a total solid look door but with the stability benefits that an engineered design brings, look no further than the Hallmark Milano Collection. These doors are constructed using exterior rated materials and are suitable for sheltered exterior applications.

All designs have natural veneer faces which are bonded to exterior plywood using marine grade glues. For the grooved designs, solid matching timber inserts are placed at corresponding centres to ensure there is no visible plywood. Clashing strips are fully concealed on the door face to complete the solid look. All exterior doors in the Milano Collection come with steel inserts on two sides to give you the most stable sheltered exterior door available.

All designs are available for interior applications.



MLN1
TASI OAK



MLN2
NZ RIMU



MLN3
BLACKWOOD



MLN4
AM. WHITE OAK

AVAILABLE AS SOLID CORE ONLY

Particle Board Core



The ultimate in strength, acoustic qualities and impact resistance, the Hallmark solid particle board door is widely used in commercial and high-end residential projects.



**MLN5
JARRAH**
(vertical grain
flush panel)



**MLN6
TASI OAK**
(horizontal grain
flush panel)

**ALL DESIGNS
AVAILABLE IN ANY
OF THE FOLLOWING
SPECIES:**



American
White Oak



Rimu



Blackwood



Cedar



Jarrah

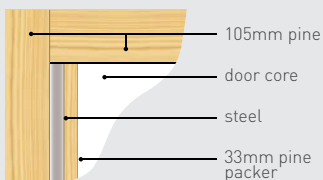


Tasmanian
Oak

ALL DOORS AVAILABLE UP TO 2400x1200MM

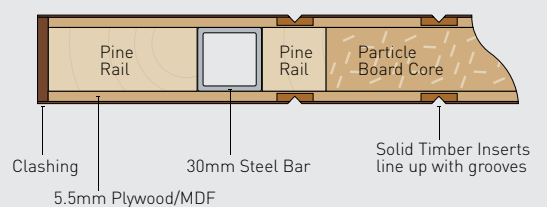
ROUT, GROOVE & STEEL SPECIFICATIONS

Steel Reinforced



Hallmarks steel reinforced doors provide excellent stability and are highly recommended in all cavity sliders. Steel reinforcing is also recommended in all doors over 2400mm high and all doors over 1000mm wide. Steel reinforcing is commonly used on the 2 long edges but in wider doors (1000mm+) it is recommended to include steel reinforcing on all 4 edges. Hallmark doors over 1400mm wide will also have central vertical steel reinforcing for extra stability.

30 x 30mm STEEL INSERT DETAIL



All Hallmark doors are covered by the Hallmark Doors Warranty. Each Hallmark door carries a label on the door edge stating the main conditions of the warranty. This label can only be removed by the painter otherwise guarantee is void. The label addresses items relating to storage and handling, installation and finishing. **It is important you read this label.** Hallmark doors are manufactured to strict quality standards and hopefully you never need to make a warranty claim. However all doors are made from timber products and thus are subject to movement. Our warranty covers door movement beyond specified limits.

hallmark exterior doors Warranty

Hallmark exterior doors carry a five year warranty against defects in workmanship & materials, specifically delamination of the skin or clashings from the core and excessive distortion from tolerance. All technical information, storage and handling specifications are as per the Hallmark interior doors warranty. Exterior doors installed in a situation with high temperature fluctuations such as spa or sauna rooms carry no warranty against warp.

Uses

- Sheltered exterior with adequate eaves covering (minimum 1200mm).
- General interior

Finishing

Exterior finishes must be used on all exterior doors. All doors must be fully painted with a full coating system prior to site installation. Exterior doors must not be painted in dark colours, particularly when the door is exposed to direct sunlight.

Storage and Handling

Inspect all doors upon arrival for freight damage and visible defects. The manufacturer must be notified within four days if damage has occurred.

Any claims outside of this time frame cannot be recognised.

Show through of any components on a 3mm skin door is not considered a defect.

Warp exceeding 5mm shall be considered a defect on doors up to 2400x910mm.

Doors exceeding this size carry no guarantee against warp. The manufacturer will accept no responsibility for defective doors when the moisture content of the timber exceeds 18%.

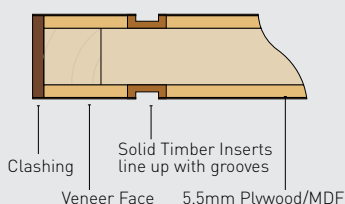
Doors must be stored flat in a clean, dry area away from direct sunlight. A flat MDF cover sheet must be placed on the top door at all times should it be exposed.

Variations in colour are not considered a defect.

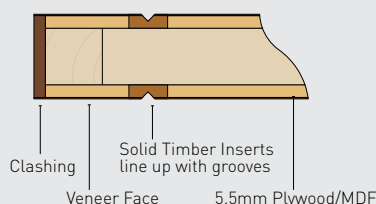
Finishing

When finishing, ensure the door is dry and free from dust and grime. The two faces and all four edges of the door must be sealed and coated within two days of arriving on site. Linseed oil or Linseed oil based products are not to be used on any of Hallmark's interior doors. Staining is at your own risk. Hallmark Doors do not accept any liability for the finished quality of a stained door. Coating 'slump' on the veneer joins is normal and will not be considered a defect. The manufacturer is not liable for the paint finish. Any fibre raise should be sanded flat before coats are applied. Fibre raise is a natural reaction and is not considered a defect.

10 x 3mm ROUT DETAIL



6 x 3mm V-GROOVE DETAIL



hallmark's door range



Fire Doors



Veneers



Speciality Doors



V-Grooved



Routed Panel



From modest beginnings in 1991 as Interior Timbers to their comprehensive development into the Hallmark Group, this family owned business is now one of the most high profile door manufacturers in New Zealand servicing all areas of NZ and into the Pacific Islands.

Covering all aspects of interior construction, Hallmark Group has become the preferred choice nationwide for large scale commercial and

high end residential projects. Attention to quality, dedication to service, and commitment to proactive project management, are all contributing factors to Hallmark Groups prized market position. Our Project Team works with Designers and Specifiers early in the development and construction process selecting veneers and specifying performance rated doors to ensure successful outcomes.

Hallmark Group has a proud history of success and a forward thinking architectural approach to being the best in their industry.

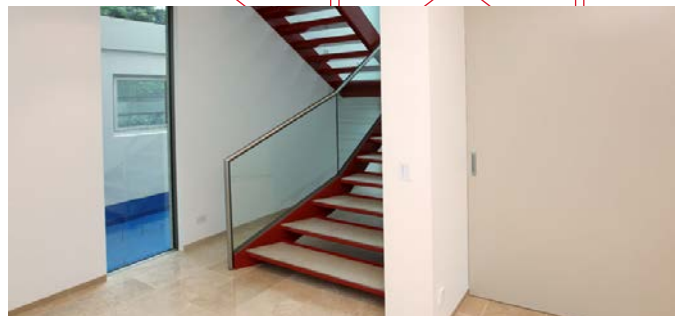
hallmark's full range

Our Comprehensive Product Range For Interiors



Doors

Hallmarks door division manufactures the most comprehensive range of doors on offer in the market. From flush paint quality through to grooved and veneer doors, the selection is suited to a wide range of residential and commercial applications.



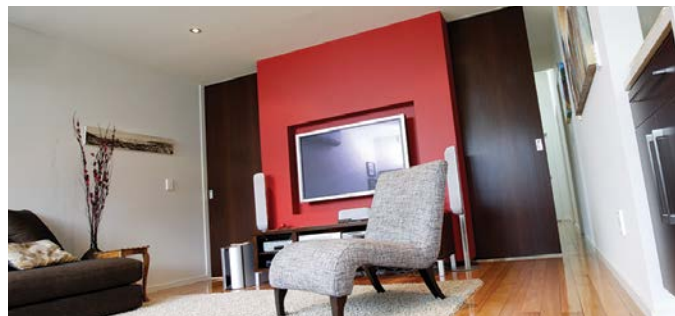
Cavity Sliders

Hallmarks sliding door division manufactures a comprehensive range of doors from cavity sliders to wardrobe sliders to room dividers. The selection is suited to a wide range of residential and commercial applications.



Fire Doors

With its dynamic ongoing R & D programme, Hallmark's performance rated doorsets offer the latest certified designs in acoustic, fire and other products. Fire doors are the major part of this product group with over 500 fire approvals.



Urbinos

The Urbinos product group manufactures and supplies aluminium profiles for commercial and high end residential fitouts. All under the 'Urbinos' brand this suite covers partitions, door frames, skirtings, door inlays and trims.

Veneers

The Hallmark Group is one of the only veneer manufacturers in New Zealand. A huge range of veneers from New Zealand and around the world are processed into layons and pressed onto MDF and other wood products for Hallmarks own door production and for veneered panels.

Rangiora

P: +64 3 313 4754 0800 TIMBER (NZ only) | F: +64 3 310 7160

355 Flaxton Rd, PO Box 413, Rangiora 7440

E: sales@hallmarkgroup.co.nz

W: www.hallmarkgroup.co.nz